

THIS DRAWING IS APPLICABLE FOR FOLLOWING SPANS

P9 TO P10
P10 TO P11
P11 TO P12
P12 TO P13
P13 TO P14
P14 TO P15
P15 TO P16
P16 TO P17
PP38 TO PP39
P61 TO P62
P65 TO P66
CP85 TO P86
P86 TO P87
P87 TO P88
P88 TO P89
P89 TO P90
P90 TO P91
P91 TO P92
P92 TO P93
P93 TO P94
P94 TO P95
P95 TO P96
P96 TO P97
P97 TO P98
P98 TO P99
P99 TO P100
P123 TO P124
P124 TO P125
P125 TO P126
P126 TO P127
P127 TO P128
DPP223 TO DPP224
PP225 TO PP226

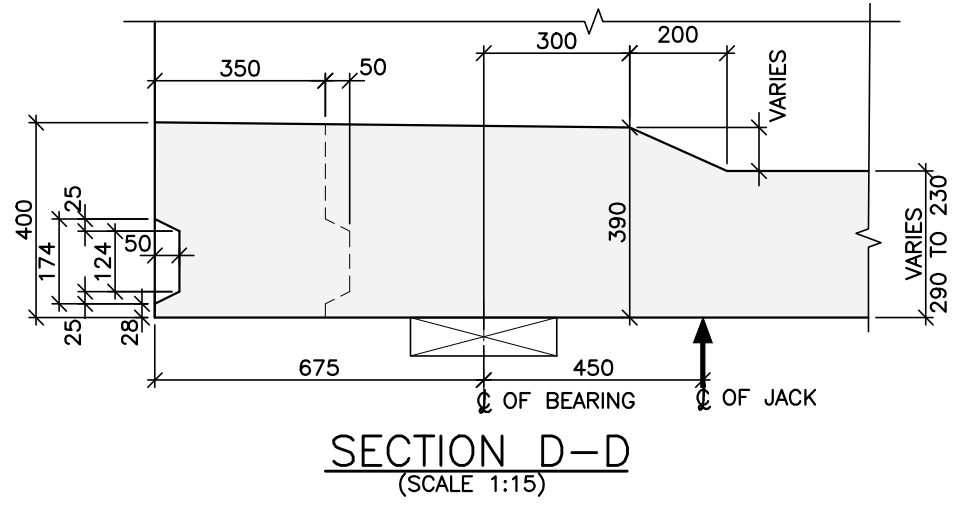
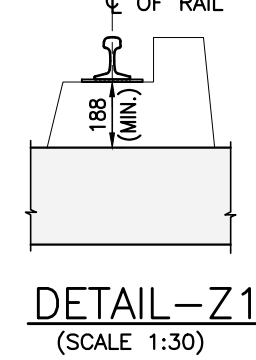
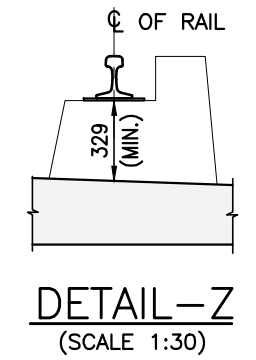
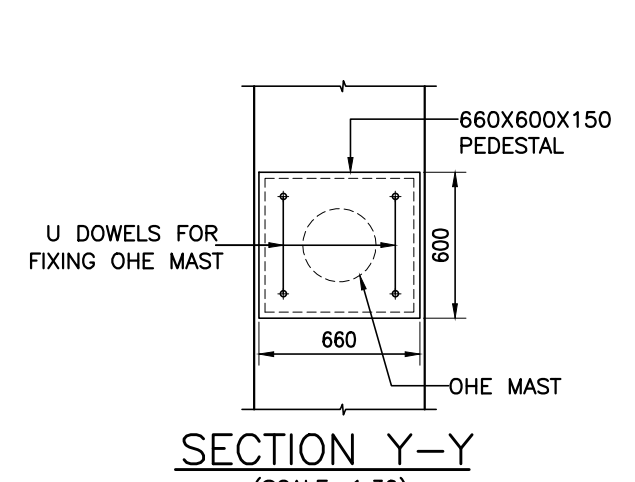
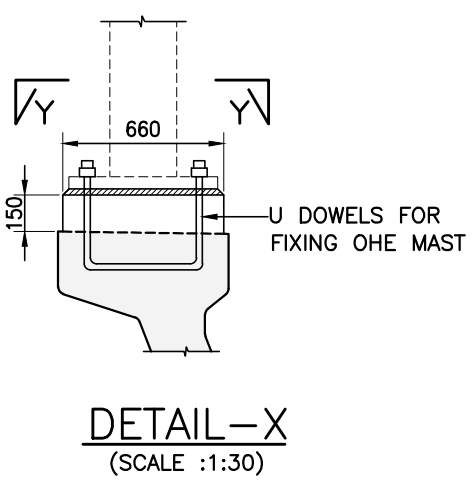
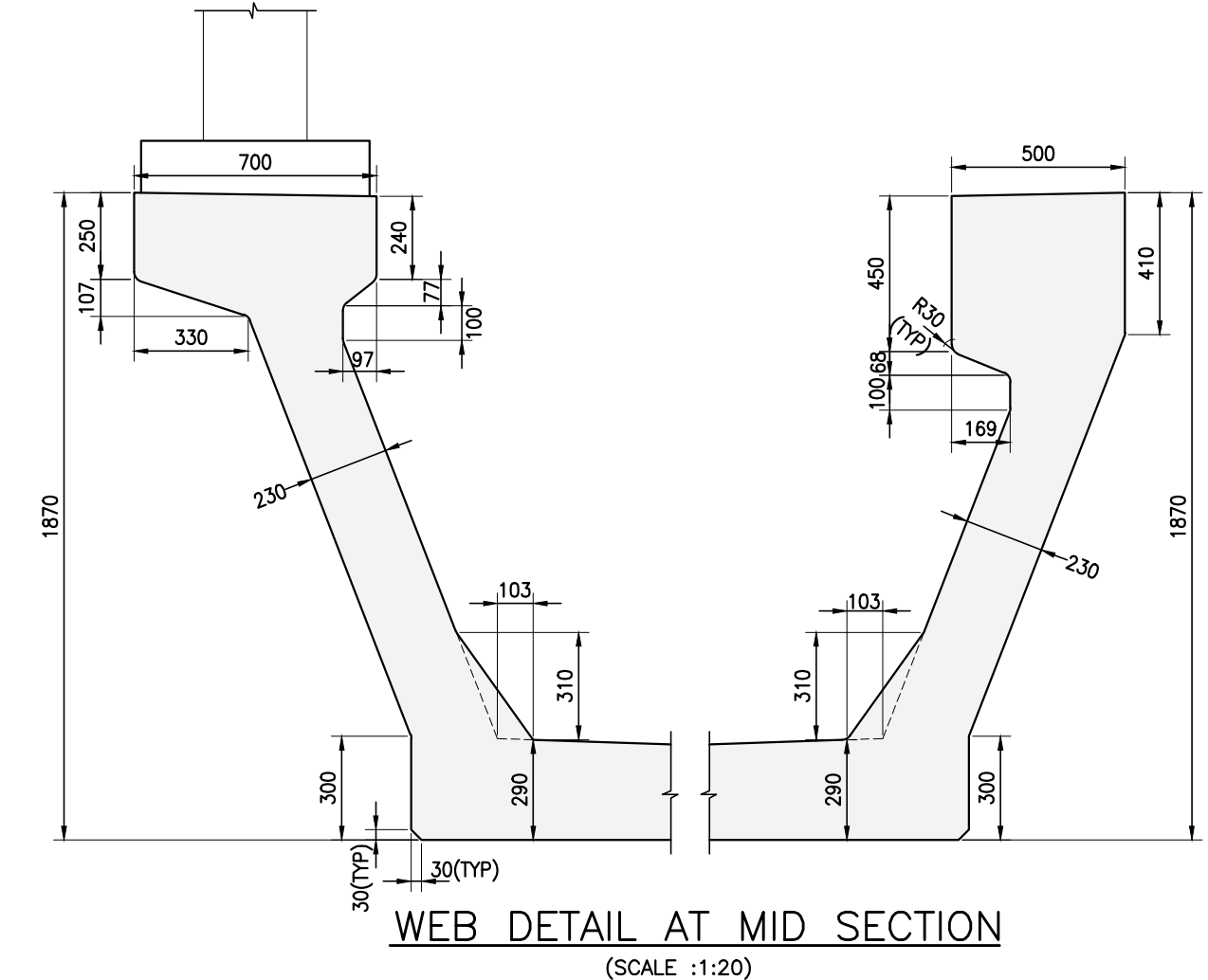
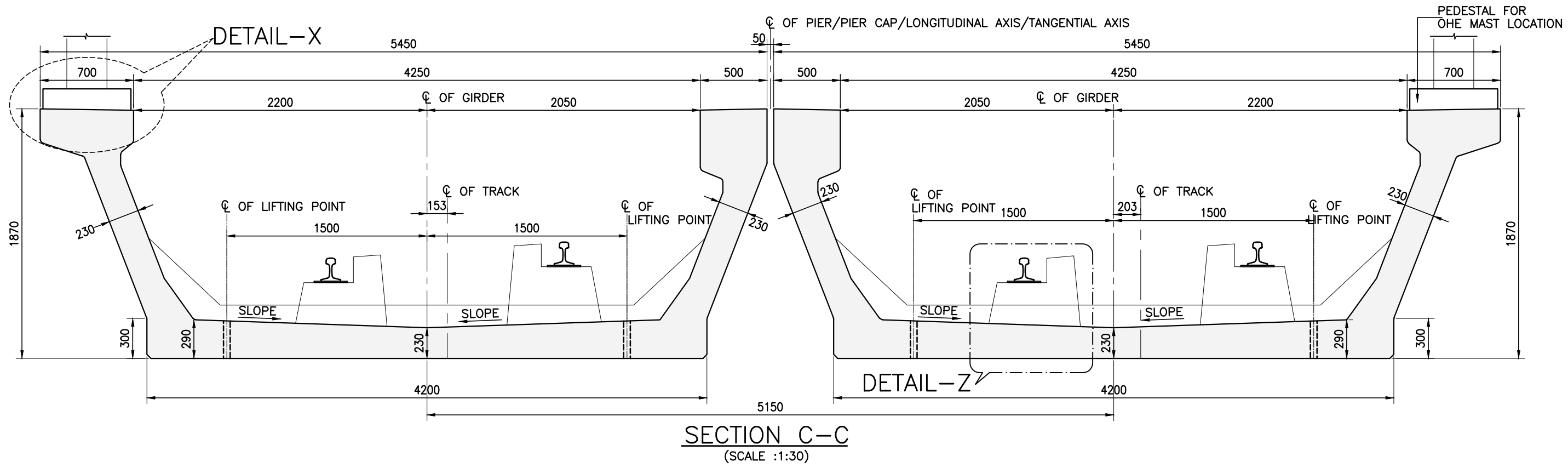
SPANS MENTIONED ARE INDICATIVE AND SUBJECT TO CHANGE AS PER REVISION IN ALIGNMENT

HOLES FOR CABLE TRAY BOLTS ARE NOT SHOWN DUE TO NON AVAILABILITY OF DETAILS.

FOR OHE MAST DETAILS REFER DWG. NO. 022077-BSRP-CR2-C-VD-GEN-20-5006

MINIMUM THICKNESS OF PLINTH IS CONSIDERED AS 329MM FOR MID SECTION & 188MM FOR SUPPORT SECTION

**GOOD FOR CONSTRUCTION**


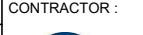


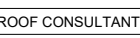


REFERENCE DRAWINGS: (LATEST REVISION)

- 022077-BSRP-CR2-C-VD-GEN-30-1021 - GENERAL ARRANGEMENT AND DIMENSIONAL DETAIL OF 25M CURVED SPAN SUPERSTRUCTURE (R<sub>2</sub>438M & R<540M)
- 022077-BSRP-CR2-C-VD-GEN-30-1023 - PRE TENSIONED STRAND DETAILS FOR 25M CURVED SPAN SUPERSTRUCTURE (R<sub>2</sub>438M & R<540M)
- 022077-BSRP-CR2-C-VD-GEN-30-1024 - REINFORCEMENT DETAILS OF 25M CURVED SPAN SUPERSTRUCTURE (R<sub>2</sub>438M & R<540M) SHEET 1 OF 2
- 022077-BSRP-CR2-C-VD-GEN-30-1024 - REINFORCEMENT DETAILS OF 25M CURVED SPAN SUPERSTRUCTURE (R<sub>2</sub>438M & R<540M) SHEET 2 OF 2
- 022077-BSRP-CR2-C-VD-GEN-30-1025 - REINFORCEMENT DETAILS OF 25M CURVED SPAN SUPERSTRUCTURE (R<sub>2</sub>438M & R<540M) SHEET 1 OF 2
- 022077-BSRP-CR2-C-VD-GEN-30-1025 - REINFORCEMENT DETAILS OF 25M CURVED SPAN SUPERSTRUCTURE (R<sub>2</sub>438M & R<540M) SHEET 2 OF 2
- 022077-BSRP-CR2-C-VD-GEN-30-1026 - GAUGES AND CLEARANCES - 25 M SPAN - FOR (R<sub>2</sub>438M & R<540M) PLAN VIEW & SECTION VIEW
- 022077-BSRP-CR2-C-VD-GEN-30-5001 - PRE TENSIONED STRAND DETAILS FOR U-GIRDER
- 022077-BSRP-CR2-C-VD-GEN-30-5006 - TYPICAL DETAIL OF ANCHOR & REINFORCEMENT OF PEDESTAL & WEB OF U-GIRDER AT OHE MAST LOCATION
- 022077-BSRP-CR2-C-VD-GEN-30-5021 - PLACING OF U-GIRDER AND I-GIRDER FOR CR2 & CR4
- 022077-BSRP-CR2-C-VD-GEN-30-5008 - TYPICAL REINFORCEMENT DETAILS AT LIFTING HOLE LOCATION FOR U GIRDER

LICENSE:

"THIS DESIGN FOR THE PROJECT HAVE BEEN PREPARED UNDER LICENSE FROM M/S SYSTRA"

NOTES: 1. ALL DIMENSIONS ARE IN MILLIMETERS LEVELS ARE IN METERS UNLESS SPECIFIED OTHERWISE. 2. FOLLOW FIGURED DIMENSIONS ONLY. 3. SUITABLE PROVISION TO BE MADE FOR ANCHORING OHE MAST.			LEGEND: <div>⊞ — BEARING</div> <div>↑ JACKING POSITION IN ELEVATION</div>			REFERENCE DRAWINGS:			REFERENCE DOCUMENTS:			KEY PLAN 			STATION BOX KEY PLAN		
REVISIONS			CONTRACTOR:  TRANSPORTATION INFRASTRUCTURE IC EDRC-SPECIAL BRIDGES			QUALITY ASSURANCE The responsibility of control, check and verification of accuracy, correctness, completeness, integration and full compliance of Contract provisions in respect of design analysis and drawing rests with Design & Build Contractor.			GENERAL CONSULTANTS			EMPLOYER:  RAIL INFRASTRUCTURE DEVELOPMENT COMPANY (KARNATAKA) LIMITED			PROJECT: BENGALURU SUBURBAN RAILWAY PROJECT (BSRP) K-RIDE CORRIDOR - 2		
			DETAILED DESIGN CONSULTANT (DDC):  SLP CONSULTANTS PVT. LTD. 2/2, 2nd Floor, 1st Stage, 1st Cross, Kannur Road, Bengaluru-560052 (080-2288 8800) www.slpconsultants.com			PROOF CONSULTANT (PC):  Indian Institute of Technology Madras IIT P.O., Chennai 600 036 INDIA			CHECKED & APPROVED			COUNTER SIGN			GENERAL CONSULTANTS:		
			SIGN			DDC			NAME			SIGN			PROJECT DIRECTOR		
D 15.07.2024 GOOD FOR CONSTRUCTION									CIVIL-GAD						SIGN		
D 20.04.2024 REVISED BY ADDING PATENT NOTE & UPDATED LIFTING POINTS									CIVIL ALIGNMENT						DESIGNATION		
C 01.12.2023 REVISED AS PER GCY COMMENTS THROUGH LETTER NO. 1063															SIGN		
B 09.10.2023 REVISED AS MARKED															DATE		
A 13.07.2023 FOR APPROVAL									CIVIL-STRUCTURAL						DATE		
REV DATE			BRIEF DESCRIPTION			DATE: 15.07.2024			NAME: PRESHT M. VJAYENDRA J. SHASHIDHAR C.			DATE: 15.07.2024			CIVIL ALIGNMENT		
						15.07.2024			IIT P.O., Chennai			15.07.2024			CIVIL-STRUCTURAL		
						15.07.2024			KVM			15.07.2024			GM/CIVIL/DESIGN		
						ISSUED BY			CIVIL-GEOTECH								